



Making the Connection



PVC Junction Box Enclosures



**ALLIED
MOULDED
PRODUCTS, Inc.**

Covered. Connected. Cost effective.

When it comes to keeping your electrical **connections** safe and secure, Allied Moulded's got you **covered**. Our new line of PVC junction box enclosures provide the protection you need at a **cost effective** price. The thermoplastic enclosure material used to make our line of hard-working junction boxes is not only resistant to all the things that Mother Nature can dish out, it's also readily available, meaning lower production time – and lower cost.

**Weather and the elements can be tough on your enclosures.
Keep connected with new Allied Moulded PVC junction box enclosures.**

It's All Material

From rain, snow and sleet, to sun, salt and chemicals, your junction boxes are subjected to a variety of potentially damaging elements every day. Allied Moulded's PVC junction boxes are built from a tough thermoplastic material which offers the following benefits:

Corrosion-resistant

Unlike metallic enclosures, PVC is immune to the corrosion and rusting that come naturally from corrosive soil conditions, making it ideal for outdoor and wash down type applications.

Chemical-resistant

Acids, alkalies and salt solutions can wreak havoc on metallic enclosures, but PVC can last longer – so your critical electrical components, instruments and controls are better protected.

Lightweight

Compared to their metal equivalents, thermoplastic materials are lighter in weight, making installation and handling easier – and reducing labor costs.

Highly-rated

Allied Moulded PVC enclosures are NEMA type 4X rated, making them dust-tight, rain-tight and perfect for outdoor applications.

Non-conductive

Unlike metallic enclosures, thermoplastics are non-conductive – thus ensuring safety.

Easily modified

Thermoplastic materials can be easily machined, so holes and access areas can be created simply, making installation even easier.

An All Around Great Choice

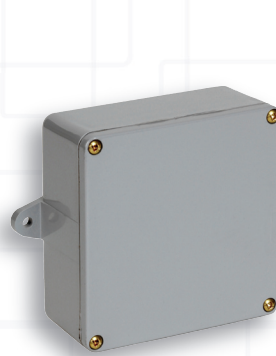
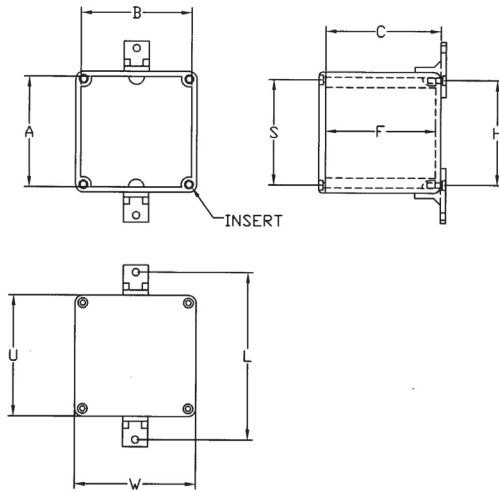
Indoor or outdoor, Allied Moulded's PVC junction boxes are a great choice for a wide range of markets.

Typical Application Types

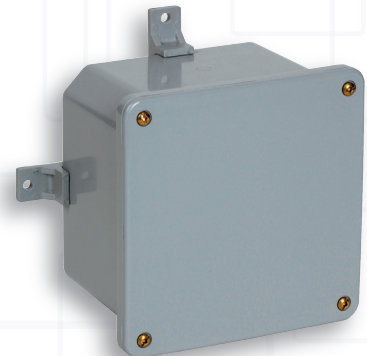
- Car wash equipment
- Irrigation systems
- Waste water treatment
- Poultry processing equipment
- Instrumentation
- SCADA systems
- Marina
- Pool and landscape lighting
- Agriculture
- Parking lots and garages

The Allied Advantage

In addition to the inherent benefits you'll realize from thermoplastics, Allied Moulded's PVC junction boxes offer a variety of additional advantages. Our nationwide distributor network and fully stocked warehouses provide our customers with timely delivery, whatever their order. In addition to this, when you bundle our junction boxes with other products from Allied Moulded's extensive line, you can reduce your freight costs.



5x5x2 with (2) molded mounting feet



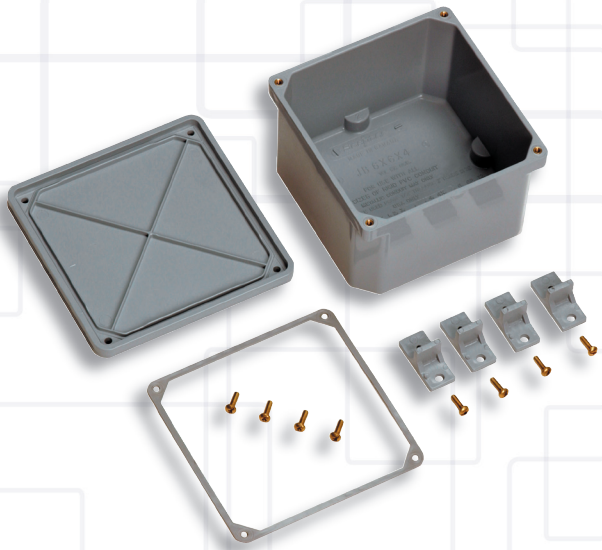
6x6x4 with (4) assembled molded mounting feet

Part No.	Box Size			Centers			Cover Dimension		Insert	Number	
	A (in.)	B (in.)	C (in.)	F (in.)	H (in.)	S (in.)	L (in.)	U (in.)	W (in.)	Thread Size	Mtg Feet
AMJB442*	3.675	3.675	2.125	2.000	----	3.450	4.643	4.010	4.010	8-32	2
AMJB444	3.675	3.675	4.188	3.750	3.300	3.450	5.661	4.010	4.010	8-32	2
AMJB446	3.675	3.675	6.225	6.000	3.200	3.450	5.528	4.010	4.010	8-32	2
AMJB552*	4.680	4.680	2.000	1.845	----	4.485	5.667	5.010	5.010	8-32	2
AMJB664	6.000	6.000	4.188	4.000	5.625	5.813	7.985	6.830	6.830	10-32	4
AMJB666	6.000	6.000	6.188	6.000	5.625	5.813	7.985	6.830	6.830	10-32	4
AMJB884	8.075	8.075	4.230	4.005	7.700	7.966	10.482	8.965	8.965	1/4-20	4
AMJB12126	12.085	12.085	6.240	6.025	11.700	11.874	14.500	12.925	12.925	1/4-20	4

*Molded in mounting feet

To find a sales representative in your area, call **(419) 636-4217** or go online at: enclosures.alliedmoulded.com

Size	Part No.	Pkg. Qty.	UPC (10085339)	Rating
4x4x2	AMJB442*	15	90000	1,2,3,4,4X, 12, 13
4X4X4	AMJB444	10	90001	1,2,3,4,4X, 12, 13
4X4X6	AMJB446	8	90002	1,2,3,4,4X, 12, 13
5X5X2	AMJB552*	12	90003	1,2,3,4,4X, 12, 13
6X6X4	AMJB664	15	90004	1,2,3,4,4X, 12, 13
6X6X6	AMJB666	4	90005	1,2,3,4,4X, 12, 13
8X8X4	AMJB884	4	90006	1,2,3,4,4X, 12, 13
12X12X6	AMJB12126	4	90007	1,2,3,4,4X, 12, 13



Each box comes standard with:

- PVC gasket
- Mounting feet
- Covers secured with threaded brass screws

Allied Moulded PVC junction boxes conform to these standards:



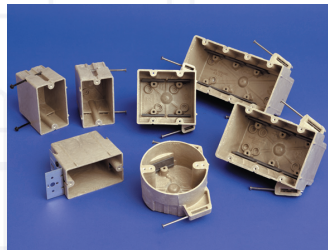
C-22.2 No. 85



UL Listed UL514C

Allied Moulded

Since our beginning in 1958 manufacturing the original fiberglass outlet box, Allied Moulded has grown to become a leader in the manufacturing of non-metallic enclosures, with a complete line of hard-working fiberglass and thermoplastic products sold through a network of distributors nationwide.



ALLIED MOULDED PRODUCTS, Inc.

222 North Union Street • Bryan, Ohio 43506 • (419) 636-4217 • Fax (419) 636-2450 • www.alliedmoulded.com