

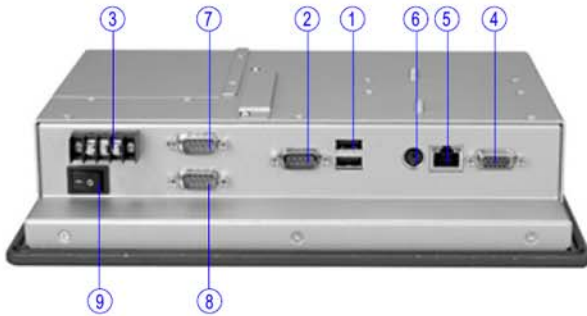
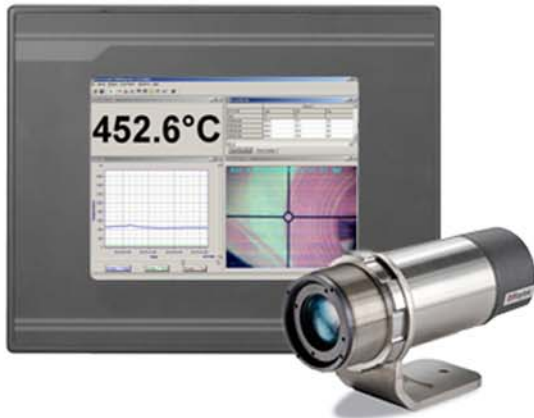
HMI84E

8.4" SVGA Touchscreen Panel PC

innovation products inc.
sales & engineering representatives



For Use with Raytek Infrared Sensors*



1. USB v1.1
2. COM4
3. DC Inlet
4. VGA Port
5. LAN (RJ-45)
6. PS/2 Keyboard/Mouse
7. COM1
8. COM2
9. Power Switch

(Sensor sold separately)

Features

- ▶ Provides standard interface with compatible Raytek Sensors
- ▶ Can support from 1 up to 15 sensors simultaneously
- ▶ Preloaded Raytek DataTemp® Multidrop Software on Windows® XP Operating System
- ▶ 8.4" SVGA LCD
- ▶ Anti-vibration design: 1.3G (operation)
- ▶ PC/104 Slot available
- ▶ Panel/Desktop/VESA/Wall Mount supported

Introduction

The HMI84E is a 8.4" fanless touchscreen panel PC and is equipped with a low power consumption CPU.

Raytek DataTemp® Multidrop Software is preloaded on every panel PC. This intuitive Windows® software displays, graphs, and stores temperature data in PC files. Remotely configure sensor parameters straight from the easy-to-use display. This software is included with the purchase of any compatible Raytek Sensor*. Each HMI84E requires a digital communications kit.

Flexibility: a PC/104 Slot

The HMI84E also offers a PC/104 Slot that allows for extended communication, including digital input for Raytek MM Video sighted sensors.

Industrial-grade Product Design

- 3A Fuse helps prevent over-voltage for power
- Aluminum front bezel is IP65/NEMA4 certified
- Supports various mountings: Panel/Desktop/VESA/Wall Mount

*Compatible Raytek Sensors

- MI Series
- TX Smart Series
- MA Series
- MR Series
- MM Series
- FA Series
- FR Series

Specifications

Front Bezel	IP65, NEMA 4 rugged protection, Aluminum front bezel
Resolution	800 x 600
CPU	Onboard VIA Eden processor 667MHz
Chipset	VIA VT8606 (Twister-T) + 82C686B
BIOS	Award 4Mbit with RPL/PXE LAN Boot ROM, SmartView Customer CMOS backup
Expansion Slot	PC/104 x 1
Power Requirements	24VDC at 800mA (HMI only)
Touchscreen	Resistive type
System Memory	512MB
Onboard Graphics	VIA Twister chip with integrates C3 Pro Savage4
Storage	Enhanced IDE interface 2.5" type Standard models include 60GB Hard Drive
Watchdog Timer	0.5 ~ 1600 sec. with 64 levels; system reset or NMI

I/O	D-Sub 9-pin x 1 (male) for RS-232/RS-422/RS-485 D-Sub 9-pin x 2 (male) for RS-232 PS/2 x 1 for keyboard and mouse RJ-45 x 1 for Ethernet D-Sub 15-pin x 1 (female) for SVGA output USB 1.1 x 2
Dimensions	11.02" (280mm)(W) x 2.4" (61mm)(D) x 8.55" (225mm)(H)
Weight	1.8kg (4lb)
Certification	CE
Environmental	Operation temperature: -10C -50C (14F - 122F) Relative humidity: 10%-95% @40C, non-condensing Operation vibration: 1.3G, 5-500Hz, random for 2.5" HDD 2.0G, 5-500Hz, random for CompactFlash Card

HMI84E

8.4" SVGA Touchscreen Panel PC

innovation products inc.
sales & engineering representatives



For Use with Raytek Infrared Sensors*

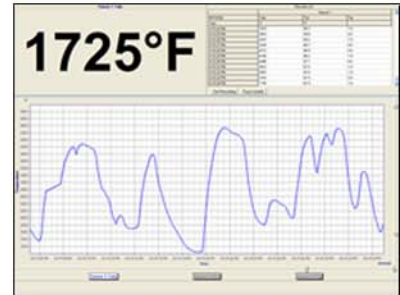
LCD

Display Type	TFT Color LCD
Display Size	8.4"
Max Colors	262k
Resolution	800 x 600
Pixel Pitch	0.203 x 0.203 (H x V, mm)
Viewing Angle	(H) 120°, (V) 100°
Luminance	200 cd/m ²
Storage Temperature	-20° ~ 60°C
Operating Temperature	0 ~ 50°C
Contrast Ratio	300:1
Backlight	CCFL x 2

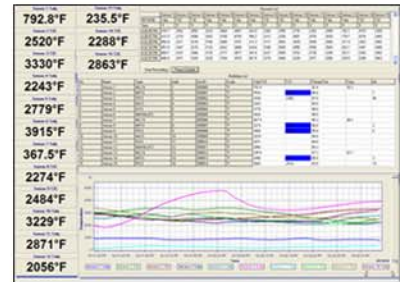


(Wall Mounting Option Available)

DataTemp® Multidrop Software



(Single Sensor)



(Multiple Sensors)

Accessories

Power Supply Box (PS866)

- Power for HMI, sensor, and digital communications kit
- Includes Raytek digital communications kit



Dimensions

